

Coming Together

S.W.C.D.

PUBLISHED BY:

**VANDEBURGH COUNTY SOIL & WATER CONSERVATION DISTRICT
921 NORTH PARK DRIVE ❖ EVANSVILLE, INDIANA 47710**

VOL. XLVII No. 1

CELEBRATING 85 YEARS

SPRING 2025

SWCD 84th Annual Meeting

The SWCD Annual meeting was moved to February 18th at 2 pm to avoid the snow storm on the 19th. The Annual Meeting was held at the SWCD office and an election took place for Joe Schalasky, of which, he was elected by show of hands and will serve another 3 year term. Jon Fehrenbacher is the River Friendly Farmer and will receive his sign at a later time. The Evansville Forest Alliance will be receiving our Urban Conservation Award this year. We are looking forward to the 2026 Annual Meeting as it will be our 85th Annual Meeting! Details will be published in the Winter Newsletter later this year. As always be sure to follow us on Facebook at www.facebook.com/vandswcd or Instagram at Vanderburgh County Soil and Water Conservation District.

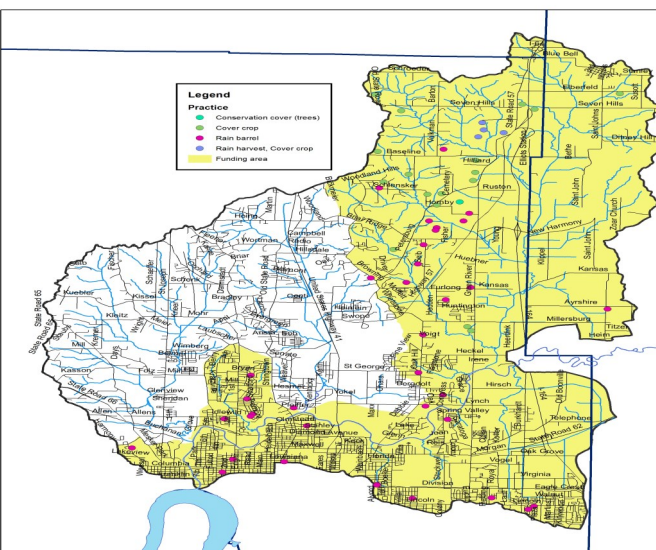
Lower Pigeon Creek – Year One Impact!

In 2024, the Lower Pigeon Creek project implemented the following:

- 428 acres cover crop planted
- 34 rain barrels installed

In total, saved 4331 tons of sediment, 1322 lb of phosphorus and 42647 lb of nitrogen from entering Otter Creek.

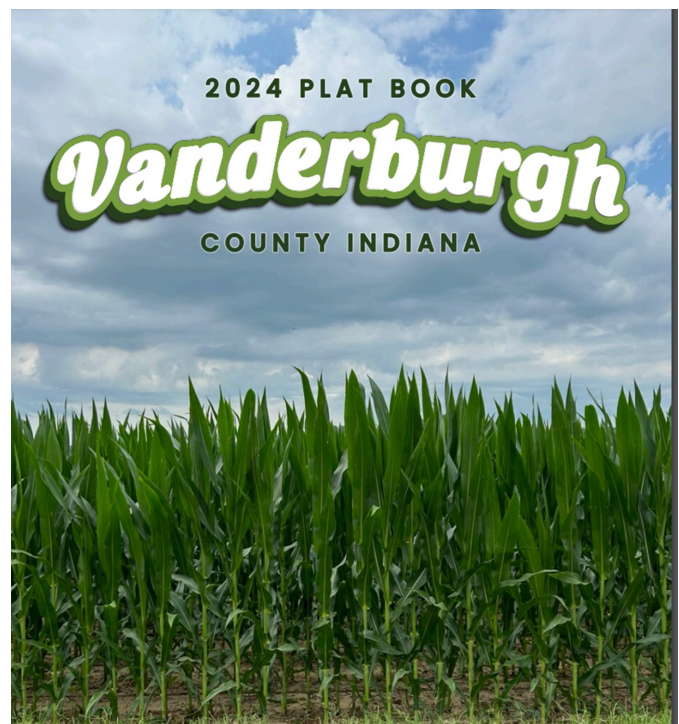
Additional projects are underway in 2025 and funds are still available to implement a variety of practices. If interested, please contact the Vanderburgh SWCD of-fice!



New 2024 Plat Books are here!

The new 2024 Vanderburgh County Plat Books are at the SWCD office and ready for purchase.

The price of the new books are \$25 and can be paid with cash or check only. Please be sure to call the office at 812-423-4426 x3 before you stop by, as we are frequently out of the office.



MISSION STATEMENT :

OUR MISSION IS TO PROVIDE
QUALITY CONSERVATION SERVICES
RESULTING IN A HARMONIOUS BALANCE
BETWEEN NATURAL RESOURCES,
SOCIAL CHANGE
AND ECONOMIC HEALTH WITHIN
VANDEBURGH COUNTY

March Cover Crop Breakfasts were a success!

Posey, Vanderburgh, Warrick and Gibson County SWCDs hosted two Cover Crop Breakfasts in March. The March 4th event was held in Boonville at the Warrick 4-H Center, and March 6th a breakfast was held at Armstrong Recreational Center in Evansville. Both events had the same topics and speakers and provided a yummy breakfast to the producers in attendance.

We started off the day with a video from the Pike County SWCD called "When Roots Run Deep in Healthy Soil".

Our first speaker was Morgan Oberly with the DNR. She discussed using raptor perches for rodent control. We gave away two bamboo raptor perches at each event. Your local SWCD also has grant money to help producers get started with raptor perches or nests on local farms.

(insert photo of Morgan)

Morgan Oberly is the District 5 Wildlife Biologist for the Indiana DNR Division of Fish & Wildlife. She covers 11 counties in southwest Indiana and is available to provide private landowners with technical assistance and management advice for wildlife habitat projects. Morgan holds a bachelor's and master's degrees in wildlife sciences. Originally from southern Ohio, she's lived in several states doing wildlife research before settling in Indiana. She loves exploring her district and trying to find answers to the many questions about wildlife she gets asked.

Next, we introduced Pat Bittner speaking on "Rooted in Sustainability".

(insert photo of Pat)

Pat Bittner is a dedicated fifth-generation farmer from Vanderburgh County, proudly continuing the legacy of soil health stewardship on his family farm. For the past ten years, Pat has upheld the regenerative practices initiated by his grandfather and father, focusing on 100% no-till farming and the use of cover crops. His commitment to these methods has significantly contributed to the farm's soil health and productivity. Pat is a mentor for Farm Advisors, where he shares his expertise and passion for soil health education with fellow farmers and the broader agricultural community. Through his work, Pat aims to promote regenerative farming practices and ensure the long-term viability of the land for future generations. If you have questions about these practices or how to get in touch with Pat through Farm Advisors, please contact your local SWCD.

We finished up the morning with a farmer panel. Our farmers included –

(insert farm panel photo)

Joseph Kern was born and raised in Mariah Hill Indiana on a small dairy farm. He went to Western Kentucky University to study Agricultural Education. He also studied abroad in Ecuador visiting farms and rural villages helping establish a youth program like 4-H and FFA. Joseph now farms cattle and row crops with his family in Spencer County. He started no-till farming in the 1980's and regrettably did not use cover crops aggressively until 2011. He also does aerial applications for farmers in Southwestern Indiana for Front 40 Ag.

Hans Schmitz farms and teaches agribusiness and drone technology at Vincennes University. He serves as a technical assistance specialist with the Indiana Ag Nutrient Alliance, promoting the intersection of 4R Nutrient Management and Soil Health principles.

Aaron Kruger farms 870 acres of yellow corn, soybeans, and cereal rye in Owensville with his 86-year-old grandfather, Ron Kruger. Since returning to the farm after graduating from Purdue in 2018, he has implemented a no-till and cover crop system on their entire farm. He utilizes diverse, high biomass cover crop mixes, planting green, and roller crimping as key

components to their operation.

Tom Rudolph is the third generation on the farm, his son being the fourth. They have been long term no-till and cover crop farmers, as well as implementing raptor perches on their farm. They're trying their best to reduce herbicide, pesticide, and fertilizer inputs. They're also utilizing the Haney test to determine the soil nutrient availability.

Frank Bender started farming in 1988 with uncle Benny Bender. At the time, his uncle was a very conventional tillage farmer. In the early 1990's Frank started no-tilling soybeans into standing corn stalks and dabbling with no-till corn into bean stubble. In the early 2000's, he tried Rye as a cover crop with the encouragement and financial support from the Posey County Soil & Water Conservation District. Today, Frank along with his son Dale and helpers Doug Bergman and Dennis Crawford, plant green into cover crops on nearly all his farm land.

Michael Childress grew up on a farm in Benton County, IN. He started working for the Posey County Co-op in 2008 and enjoys serving the needs of the Posey County Ag community.

Make sure you are on the contact list at your local SWCD to stay informed about all of our future events and our 2025 CWI Cover Crop starting in May.





The FARMWISE Indiana Network connects people and businesses who grow, process, distribute, and purchase food. Our suite of services is designed to support wholesale market channels, and our network of value chain professionals are here to assist.

Are you an Indiana farmer? Our Network can...

- meet with you to learn more about your food farming operation
- suggest potential market buyers and support the conversations
- connect you with opportunities that fit your farm and values



Are you a food service operation? Our Network can...

- meet with you and your staff to understand your local sourcing goals and values
- suggest strategies to scale up your local buy
- connect you with potential suppliers that fit your needs

eri.iu.edu/farmwise
812-856-7189
farmwise@iu.edu

Laura Stoltz
Regional Value Chain Professional
Evansville, IN | lstoltz@iu.edu

Register by April 4, 2025

INDIANA'S MISSISSIPPI RIVER BASIN SOIL SAMPLING PROGRAM

 | www.ISDA.IN.gov

INDIANAPOLIS (Feb. 24, 2025) - The Indiana State Department of Agriculture (ISDA) and partners throughout the state have worked with the Gulf Hypoxia Program (GHP) to develop a no-cost program with a focus on increasing the knowledge and use of soil sampling as a nutrient management practice to benefit farm operations. The program, titled Indiana's Mississippi River Basin Soil Sampling Program, is open now for applicants.

"Indiana is a leader in soil conservation and that is thanks to programs like this one," said [Lt. Governor Micah Beckwith](#), Indiana's Secretary of Agriculture. "This funding will support our Hoosier farmers and landowners looking to increase soil conservation efforts on their farms, which we know will help them keep their soil fertile and healthy for generations to come."

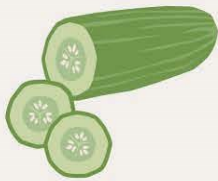
ISDA promotes the importance of nutrient management and the principles of the 4R Nutrient Stewardship framework. The 4R framework incorporates using the "Right Source, Right Rate, Right Time, and Right Place" to achieve cropping system goals. This program focuses on soil sampling and testing as it is a key component, and first step, of developing a plan for nutrient management. Soil sampling provides an assessment of the soil's fertility which can be used for making fertilizer application recommendations, assessing available nutrients over time, increase farmer profitability and enhance environmental protection by reducing the risk of nutrient loss. This project was developed to help further Indiana's State Nutrient Reduction Strategy efforts.

"As a farmer myself, I know firsthand how much time, money and effort goes into soil testing on farms," said [ISDA Director Don Lamb](#). "This program is crucial for Hoosier farmers and landowners to be able to afford soil conservation efforts and nutrient stewardship which are integral on their farms. I am thankful for this funding and for our team and partners who make this soil conservation initiative a success year after year."

This program includes row crop fields, pastures, hay and specialty crops located within Indiana's portion of the Mississippi River Basin. Eligible landowners will be prioritized by acreage enrolled (i.e., 100 acres or less), fields that have never been soil sampled and fields that haven't been sampled regularly (i.e., within the last 4 years). Further prioritization may be implemented based on ISDA's workload capacity. This program excludes hobby gardens and private lawns. Interested landowners can sign-up online at [ISDA's website](#) or by reaching out to soilsampling@isda.in.gov.

Sign-ups begin Monday, Feb. 24, 2025, and ISDA is accepting registrations until Friday, April 4, 2025 or until funds are exhausted.

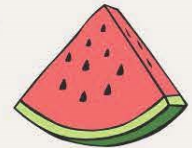
This program was made possible thanks to ISDA, Indiana Soybean Alliance, Indiana Corn Marketing Council, Indiana Agriculture Nutrient Alliance (IANA), Indiana Conservation Partnership (ICP) members, farmers, and crop advisors.



Free Soil Test & Site Visit



If you have a small garden where you're growing vegetables, fruits, and/or flowers and live in the following counties, you're eligible for a free soil test!



Posey Vanderburgh Spencer
Warrick Pike Gibson



1. Contact your local Soil & Water Conservation District



2. Schedule a site visit with us to come take the soil sample



3. When your results come in we'll follow up to discuss your soil results and how to better improve your soil health!



WARRICK COUNTY SWCD, IN PARTNERSHIP WITH PURDUE EXTENSION - WARRICK COUNTY PRESENT:

RESTORING ROOTS

TRANSFORMING MINE LANDS:
ESTABLISHING RESIDENTIAL TREES AND THE BENEFITS

OUR LINEUP OF EXPERT SPEAKERS INCLUDE:

AMANDA MOSIMAN: PURDUE EXTENSION, WARRICK COUNTY:
“FORESTRY FOR THE BIRDS”

AMANDA BRADSHAW BURKS: PURDUE EXTENSION, VANDERBRUGH COUNTY:
“TREE SELECTION AND CARE”

KIT TURPIN: DIRECTOR OF INDIANA ABANDONED MINE LAND PROGRAM, DNR, DIVISION OF RECLAMATION:
“ESTABLISHMENT OF TREES ON SURFACE MINE LAND”

FOR YOUR CONVENIENCE, PLEASE CHOOSE WHICH SESSION WORKS BEST FOR YOU!

FIRST 20 PEOPLE WHO REGISTER GET A FREE TREE ID BOOK!!

APRIL 9, 2025 | 5 - 7 P.M. CDT
THRESHERMAN'S PARK
2144 NEW HARMONY RD,
BOONVILLE, IN 47601

APRIL 12, 2025 | 9 - 12 P.M. CDT
NEWBURGH CHANDLER
PUBLIC LIBRARY
4111 LAKESHORE DR,
NEWBURGH, IN 47630

CALL 812-897-2840 EXT. 3 OR EMAIL WARRICKSWCD@GMAIL.COM TO REGISTER FOR THE WORKSHOP. PLEASE REGISTER BY APRIL 8, 2025



Extension - Warrick County

PURDUE UNIVERSITY IS AN EQUAL OPPORTUNITY/EQUAL ACCESS UNIVERSITY. IF YOU ARE IN NEED OF ACCOMMODATIONS TO ATTEND THIS PROGRAM, PLEASE CONTACT AMANDA PRIOR TO THE MEETING AT 812 897 6100 OR BAILEY1@PURDUE.EDU. IF YOU NEED AN INTERPRETER OR TRANSLATOR, PLEASE CONTACT AMANDA PRIOR TO THE MEETING AT 812 897 6100 OR BAILEY1@PURDUE.EDU

Spring
**Native
Plant Sale**

**Saturday, May 31, 2025
9am—12noon**

Wesselman Woods Nature Center
551 N Boeke Rd, Evansville, IN 47711

Lots of native perennial plants, flowers, trees, and shrubs
perfect for butterfly & pollinator gardens
and natural landscaping!



presented by

Indiana Native
Plant Society
Southwest Chapter



indiananativeplants.org



VANDEBURGH COUNTY SWCD

BOARD OF SUPERVISORS:

Ron Adler, Chairman, Farmer
 Kevin Rexing, Vice-Chair, Farmer
 Joe Schalasky, Treasurer, farm manager at Seton Harvest
 Pat Bittner, Member, Farmer
 Misty Minar- Botanical Curator, Mesker Park Zoo

ASSOCIATES:

Kay Hoffherr, Retired Teacher, Central High School
 Linda Freeman, County Surveyor
 Heath Hamilton, U.S. Fish & Wildlife Biologist
 Steve Helfrich, Retired USI Facilities Director
 Eldon Maasberg, Retired Farmer

Board Meetings are held on the fourth Monday at 4 p.m. of each month Unless otherwise advertised. The public is invited to attend all meetings

OFFICE STAFF:

SOIL & WATER CONSERVATION DISTRICT (SWCD)

Megan Klenck, Water Quality Specialist
 Erin Shoup, Administrative Assistant

NATURAL RESOURCE, CONSERVATION SERVICE (NRCS)

Christian Jimenez, District Conservationist

INDIANA STATE DEPARTMENT OF AGRICULTURE (ISDA)

Megan Ritterskamp, Resource Specialist

OFFICE LOCATION

VANDEBURGH COUNTY SWCD
 921 North Park Dr.
 Evansville, IN 47710-3629
 http://www.vandswcd.org
 TELEPHONE: (812) 423-4426 X 3
 FAX (855) 408-4686

THIS NEWSLETTER IS COMPLIMENTS OF THE FOLLOWING SPONSORS AND ALL OF THE ORGANIZATIONS THAT MAKE OUR PROGRAM SUCCESSFUL DURING THE YEAR.

10 Locations Serving You!
 Evansville • Princeton
 Henderson • Newburgh
 (812) 426-0011
 www.donutbank.com



FINANCING
 life outside the big cities.
 We help rural residents build, farms grow and businesses expand.
 farm CREDIT MID-AMERICA
 Call (812) 867-3009 or go to e-farmcredit.com
 15747 Neeley Street, Evansville, IN 47725

JACKSON SEED SERVICE
 SHAWN JACKSON
 Independent Sales Representative for Pioneer® brand products
 (812) 480-6555
 14510 Old State Rd. Evansville IN 47725

KRAFT NURSERY & FARMS INC.
 "Complete Commercial & Residential Landscaping"
 Phone: 812-963-5011 Fax: 812-963-5052
 Email: kraftnursery@hotmail.com Web: www.kraftnursery.com
 14930 Bender Rd. Evansville, in 47720

UMBACH & ASSOCIATES, LLP
 CERTIFIED PUBLIC ACCOUNTANTS
 400 Bentees Wes Court
 Evansville, IN 47715
 (812) 477-2244
 Fax (812) 421-9303
 wingram@umbach.com
 www.umbach.com
 Warren J. Ingram, CPA, Partner

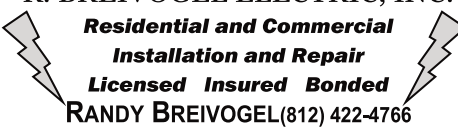
Mulzer Crushed Stone, Inc.
 A CRH COMPANY
 www.mulzer.com 844-480-6803

branded by
woods
 do something creative today
 p.o. box 99 | 601 west main street | holland, indiana 47541
 phone: 812.536.2261 | toll free: 800.796.1523 | brandedbywoods.com

POSEY COUNTY CO-OP
 Hubstadt • Poseyville
 St. Wendel • Mt. Vernon •
 (812) 838-4468



R. BREIVOGEL ELECTRIC, INC.
 Residential and Commercial Installation and Repair
 Licensed Insured Bonded
 RANDY BREIVOGEL (812) 422-4766



Curran Miller
 Auction/Realty
 812-474-6100
 www.curranmiller.com
 Email: cmar@curranmiller.com
 1005 E Walnut St. | Evansville, IN 47714

Ad space available

(812) 386-6580
 Fax: (812) 386-7537
Kiesel Enterprises INCORPORATED
 1198 S. KIESEL DRIVE
 www.kieselent.com



Ad space available

Ad space available

Ad space available

Ad space available

Ad space available

Ad space available

Coming Together

PUBLISHED BY:
VANDERBURGH COUNTY SOIL & WATER CONSERVATION DISTRICT
 921 NORTH PARK DRIVE • EVANSVILLE, INDIANA 47710

NONPROFIT ORG.
 U.S. POSTAGE
 PAID
 Evansville, Indiana 47708
 Permit No. 47

RETURN SERVICE REQUESTED
PLEASE DON'T TRASH ME-PASS ME!
 I'M RECYCLED AND RECYCLABLE



IN THIS ISSUE:
 SWCD 84TH ANNUAL MEETING
 NEW 2024 PLAT BOOKS ARE HERE
 MARCH COVER CROP BREAKFASTS WERE A SUCCESS
 FARMWISE NETWORK
 ISDA SOIL SAMPLE PROGRAM
 PUSH IT-SOIL SAMPLING FOR GARDENS
 RESTORING ROOTS PROGRAM
 SPRING NATIVE PLANT SALE

THIS NEWSLETTER IS COMPLIMENTS OF THE FOLLOWING SPONSORS AND ALL OF THE ORGANIZATIONS THAT MAKE OUR PROGRAM SUCCESSFUL DURING THE YEAR.

 100% PURE No added ingredients 812-963-5647	<p align="center">Ad space available</p>	 BRAD & CRAIG VIEIRA D: (812) 867-2887 C: (812) 305 5424 F: (812) 867-3228 E: craig@vieirabrothersexavating.com
MARTIN FARM DRAINAGE, INC. FIELD TILE INSTALLATION LASER EQUIPPED DITCH CLEANING AND DUMP TRUCK SERVICE SCRAPER RENTAL - BACKHOE WORK - DOZER WORK DRYDAM INSTALLATION - ROCK CHUTES AND TILE BUD MARTIN (812) 845-2796 RANDY MARTIN (812) 874-2723	 Tim Mason 812-664-0845 timmason@remax.net www.TimMasonTeam.com • Real Estate • Farm • Land • Auction	ALLEN RELLEKE EXCAVATING, LLC CLEARING, LAKES, CONSERVATION WORK 812-305-3051 @ 812-963-5000
 812-963-8102 www.adlerexcavating.com "SINCE 1963"	 LAKE & POND MANAGEMENT VEGETATION MANAGEMENT FISHERY MANAGEMENT FOUNTAINS & AERATION DIY SUPPLIES & ADVICE 2447 Locust Creek Drive, Evansville, IN 812-402-1001 AQUATICCONTROL.COM	
 EVANSVILLE WATER HAULING, INC. 812-867-5858 RESIDENTIAL & COMMERCIAL SERVICE ★ WE HAVE MODERN STAINLESS STEEL DELIVERY TANKS ★ SWIMMING POOL FILLING SPECIALIST	 BRYAN TURLEY Master Jeweler MATT TURLEY Bench Jeweler JOAN TURLEY Sales Custom Ring Designing • Watch & Jewelry Repair 12 N.W. 3rd Street Evansville, IN 47708 Phone (812) 422-0531 Evansville Courier & Press Reader's Choice Platinum Award Winner 4 Years in a row	 SOUTHERN INDIANA DRAINAGE Drainage Tile Sales & Installation Excavation & GPS Contour Mapping GREG BLANKENBERGER 8940 N. Highway 65 - Cynthiana, IN 47612 Email: sid1974@att.net Phone: 812-449-0006
Goedde Oil, Inc. Est. 1996 Haubstadt, IN	 STRAUB - OUTDOOR POWER Toro - Ariens - Gravely - Stihl - Sales & Service www.strauboutdoorpower.com 14101 Highway 65 Evansville, IN 47720 (812) 963-5024 Fax (812) 963-8381	VANDERBURGH COUNTY FARM BUREAU, INC. 1010 W. Buena Vista Rd. EVANSVILLE, INDIANA 47710 PHONE: 812-426-2761
 Since 1918 REIS TIRES SALES Evansville, Indiana "100 YEARS" "Retiring To Live Since 1918" 812 - 425 - 2229	 SYNERGY PARTNERS CONTACT SYNERGY PARTNERS TODAY FOR BULK DELIVERY OF FUELS • LUBRICANTS • PROPANE • DIESEL EXHAUST FLUID (866)-329-0081 WWW.SYNERGYPARTNERS.COM	New Harmony Native Trees & Shrubs Plant Native Species, Build Habitat 🌿 812.781.8113 info@buroak.net

ALL PROGRAMS AND SERVICES OF THE SOIL AND WATER CONSERVATION DISTRICT ARE OFFERED ON A NONDISCRIMINATORY BASIS, WITHOUT REGARD TO RACE, COLOR, NATIONAL ORIGIN, RELIGION, SEX, AGE, MARITAL STATUS OR HANDICAP.